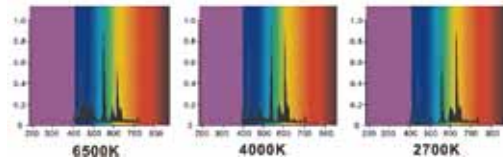


Triphosphor fluorescent tube



- Using triphosphor fluorescent powder, advanced water-powder coating technique, which increases efficiency of light and reduces light attenuation.
- Good lighting effect and energy-saving, small color difference, CRI up to above 85., the illuminated objects looks more true and eyes feel more comfortable.
- Warmwhite, coolwhite and daylight which can suitable for different color temperature requirement.
- Additional cathode protection ring at two ends of tube, which prevents the tube from black.
- Advanced water-powder coating technique, which increase efficiency of light and reduces light attenuation.
- Using triplewire filament to ensure sufficient electron powder and prolong service life.

T5 fluorescent tube



Code	Type	A	C Max(mm)	Φ	Current	Voltage	Luminous (lm)	Life Span	Socket
io-404001	4W-2700K/4000K/6500K	135.9	150.1	16	0.17A	29V	195/190/180	12000h	G5
io-404002	6W-2700K/4000K/6500K	212.1	226.3	16	0.16A	42V	310/300/280	12000h	G5
io-404003	8W-2700K/4000K/6500K	288.3	302.5	16	0.145A	56V	430/420/400	12000h	G5
io-404004	13W-2700K/4000K/6500K	516.9	531.5	16	0.165A	95V	920/840/750	12000h	G5
io-404005	14W-2700K/4000K/6500K	549	563.2	16	0.17A	82V	1140/1140/1045	20000h	G5
io-404006	21W-2700K/4000K/6500K	849	863.2	16	0.17A	123V	1850/1850/1660	20000h	G5
io-404007	28W-2700K/4000K/6500K	1149	1163.2	16	0.17A	167V	2470/2470/2350	20000h	G5
io-404008	35W-2700K/4000K/6500K	1449	1463.2	16	0.17A	209V	3135/3135/2890	20000h	G5



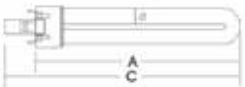
T8 fluorescent tube



Code	Type	A	C Max(mm)	Φ	Current	Voltage	Luminous (lm)	Life Span	Socket
io-404009	10W-2700K/4000K/6500K	331.3	345.5	26	0.22A	52V	380/380/350	15000h	G13
io-404010	15W-2700K/4000K/6500K	437.4	451.6	26	0.31A	55V	970/970/900	15000h	G13
io-404011	18W-2700K/4000K/6500K	589.8	604	26	0.37A	57V	1560/1480/1450	15000h	G13
io-404012	30W-2700K/4000K/6500K	894.6	908.8	26	0.365A	96V	2540/2400/2300	15000h	G13
io-404013	36W-2700K/4000K/6500K	1199.4	1213.6	26	0.43A	103V	3450/3350/3200	15000h	G13
io-404014	58W-2700K/4000K/6500K	1500	1514.2	26	0.67A	110V	5400/5300/5000	15000h	G13



PLS fluorescent tube



Code	Type	A	C Max(mm)	Φ	Current	Voltage	Luminous (lm)	Life Span	Socket
io-404015	5W-2700K/4000K/6500K	85	107	12	0.18A	35V	240/240/230	10000h	G23
io-404016	7W-2700K/4000K/6500K	115	137	12	0.175A	47V	380/380/350	10000h	G23
io-404017	9W-2700K/4000K/6500K	145	167	12	0.17A	60V	580/580/540	10000h	G23
io-404018	11W-2700K/4000K/6500K	215	237	12	0.155A	90V	890/890/820	10000h	G23
io-404019	13W-2700K/4000K/6500K	170	192	12	0.175A	91V	840/840/750	10000h	G23



PLC fluorescent tube



Code	Type	A	C Max(mm)	Φ	Current	Voltage	Luminous (lm)	Life Span	Socket
io-404020	10W-2700K/4000K/6500K	95	116	12mm	0.19A	64V	580/580/540	10000h	G24d-1
io-404021	13W-2700K/4000K/6500K	122	143	12mm	0.175A	91V	890/860/840	10000h	G24d-1
io-404022	18W-2700K/4000K/6500K	142	163	12mm	0.22A	100V	1200/1180/1120	10000h	G24d-2
io-404023	26W-2700K/4000K/6500K	162	183	12mm	0.325A	105V	1780/1730/1680	10000h	G24d-3
io-404024	18W-2700K/4000K/6500K	142	163	12mm	0.22A	100V	1200/1180/1120	10000h	G24q-2
io-404025	26W-2700K/4000K/6500K	162	183	12mm	0.325A	105V	1780/1730/1680	10000h	G24q-3

